

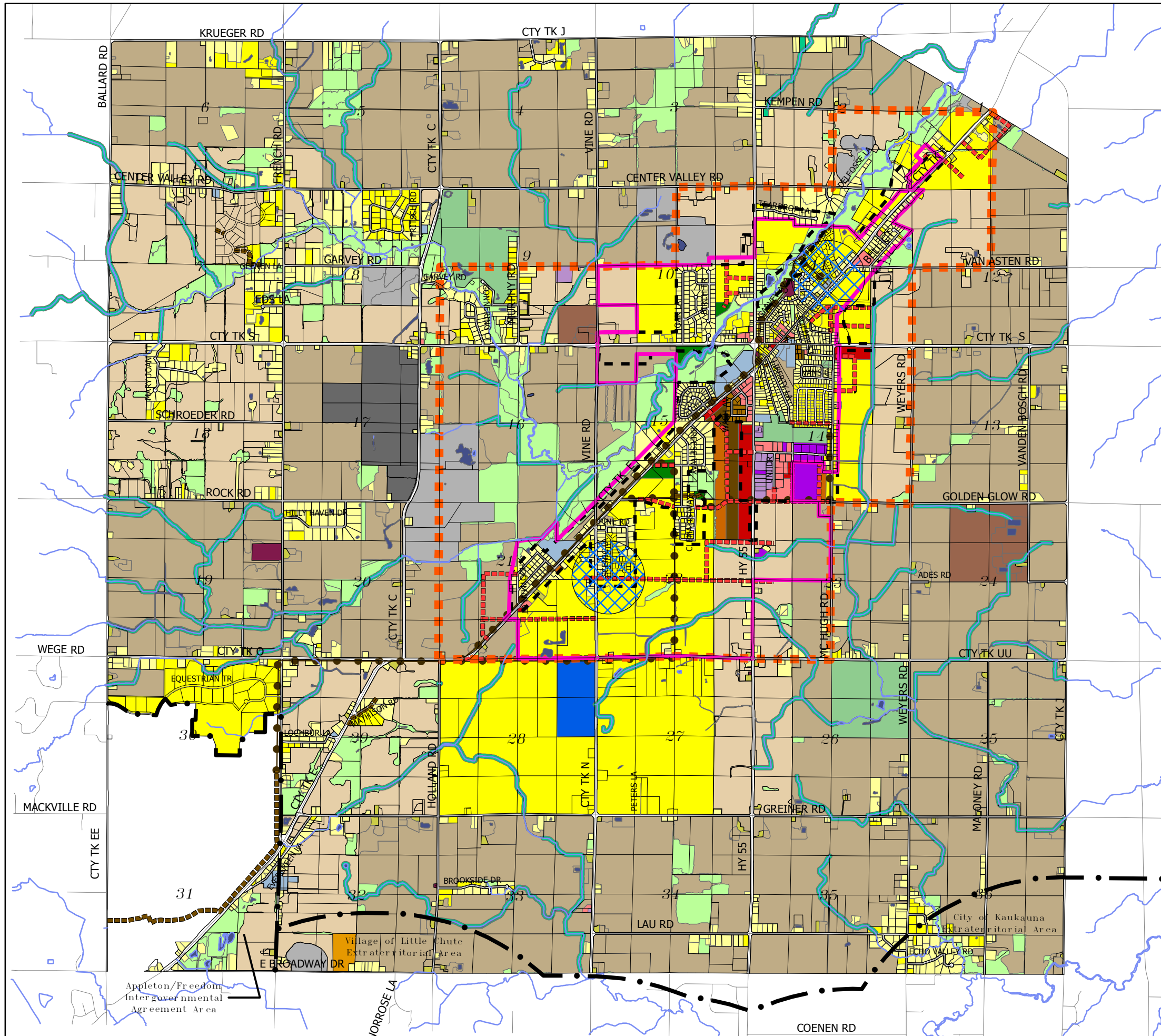
Town of Freedom Future Land Use Map



Legend

Land Use Categories

- | Future | Existing | |
|--------|----------|--|
| | | Single and Two Family Residential |
| | | Farmsteads-Includes Outbuildings |
| | | Duplex |
| | | Mobile Home Parks |
| | | Multiple Family/Group Quarters/ Retirement Homes |
| | | Commercial |
| | | Industrial |
| | | Mining/Quarry Sites |
| | | Parks and Recreation |
| | | Institutional Facilities |
| | | Utilities |
| | | Roadways |
| | | Livestock Intensive Agriculture |
| | | Rural Character |
| | | Rural Transition |
| | | General Woodlands/Wetlands |
| | | Water Features |
| | | Environmental Corridor |
| | | Creeks/Drains |
| | | Future Roads |
| | | Existing Sewer Service Area Boundary |
| | | Sanitary District Boundary |
| | | Sewer Service Planning Area Boundary |
| | | Mapped Trail |
| | | Concept Trail |
| | | Extraterritorial Boundary |
| | | Source Water Protection Zones - Freedom Sanitary District |



Martenson & Eisele, Inc.
 1377 Midway Road
 Menasha, WI 54952
 www.martenson-eisele.com
 info@martenson-eisele.com
 920.731.0381 1.800.236.0381

Planning
 Environmental
 Surveying
 Engineering
 Architecture